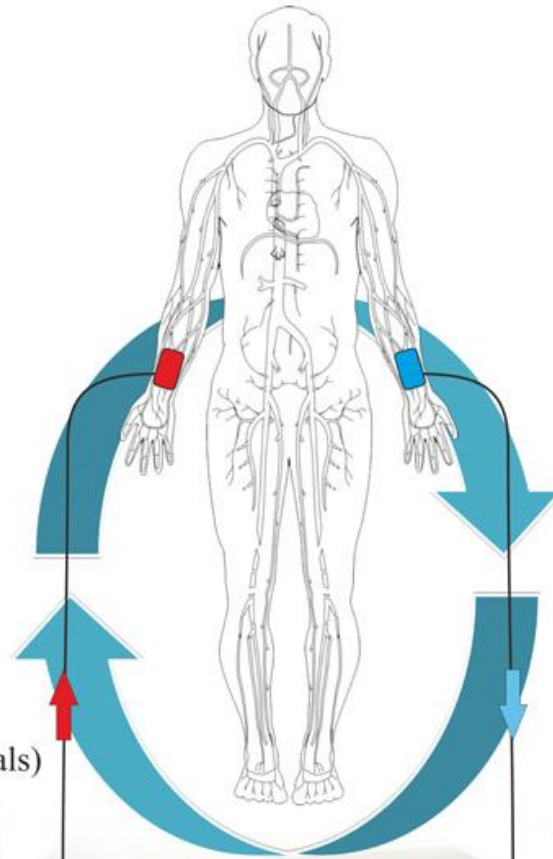


# The EMOST<sup>®</sup> process

transmitting the natural based extrem-low intensity analogue signals back in natural range



Transmitting back totality of signals (may versions of potentials)

Detection of natural bioelectric and bioelectromagnetic signals



Used bands of detected signals (may periods of potentials)

1. 1-10 signal/sec
2. 10-100 signal/sec
3. 100-1000 signal/sec
4. 1000-10000 signal/sec
5. 10000-100000 signal/sec
6. 100000-1000000 signal/sec

## 1. Band-pass

## 2. Amplification

-20 dB,  
60 dB

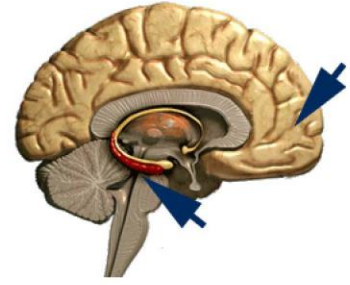
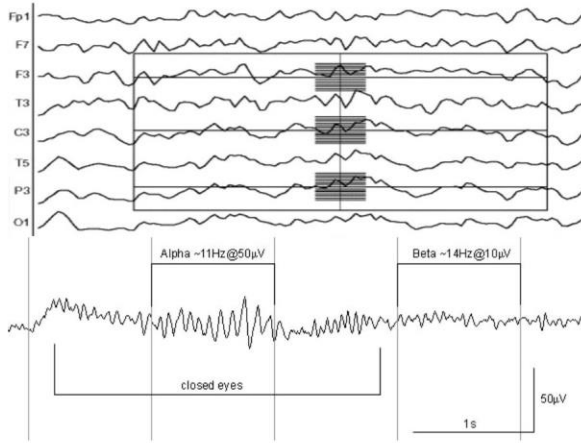
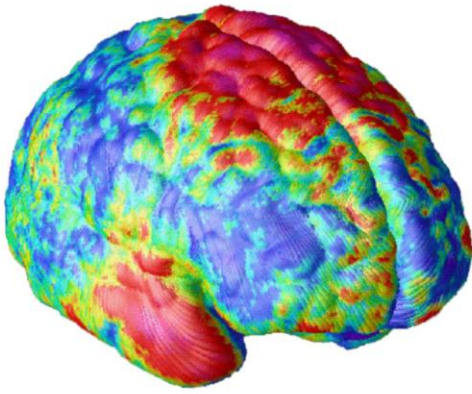
## 3. Expansion, and extension of variations

Fourier transform  
-14 dB to 5 MHz  
0,1 sec. – 102 sec

## Indicatio:

combinations of signal-bands, variations of amplification and extension of variations





**Probably:**

**Frontal lobe:** also involved in emotion, and in the ability make plans, think creative, and combinations of synapses (from/to memories, experiences etc.)

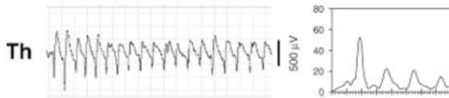
**Amygdala:** evaluates sensory information, determining it's importance, aggression, anxiety...

**Thalamus:** relay center, directs sensory messages (signaling testosterone immun function, apoptose etc.)

**Hypothalamus:** responsible for regulating basic biological needs: temperature, thirst, hunger etc.



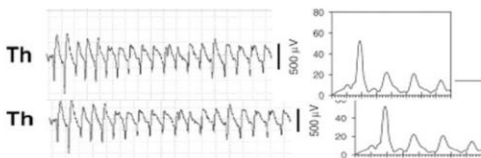
**EMOST™** recognising and separating it's functional bioelectric signals in it's natural range: (from 1 Hz, potentials  $\mu V$ )



**EMOST™** makes slightly variations of amplification (from 1 Hz, potettials  $\mu V$ , from -20 dB to 60 dB) via analogue (non-linear, non-digitalized) mode, and makes expansion, slightly extension of functional signal variations via Fourier lines (-14 dB, 5 MHz)



**EMOST™ - the EM Own Signal therapy™** - then the variations and the original functional signal are returned through another free nerve ending zone, and helps for the neurovegetative system in signal transmission, signal recognising and electro-chemical balancing.



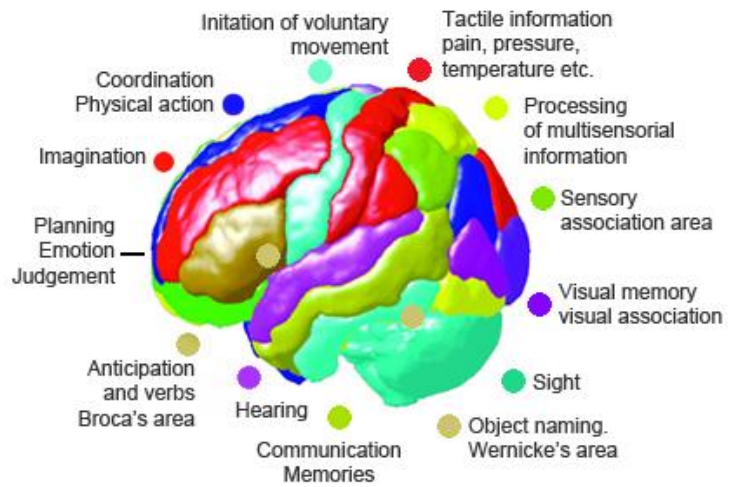
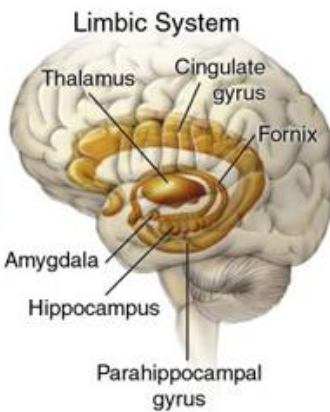
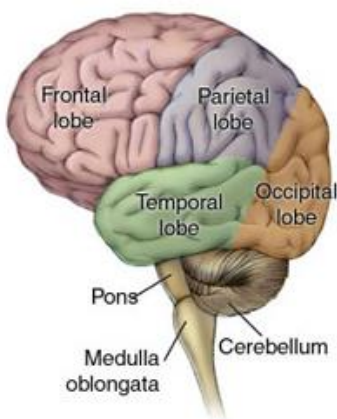
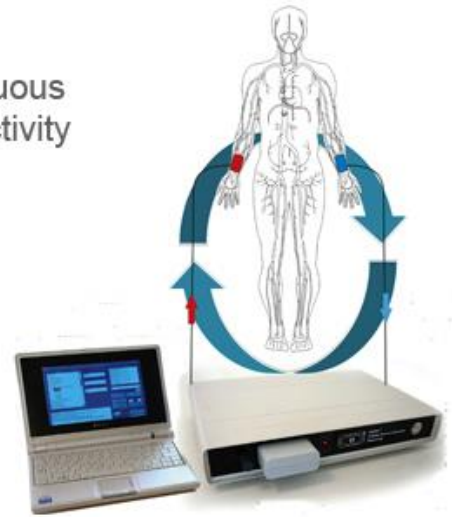
**EMOST™ - the EM Own Signal therapy™** - the retransmitted own information helps re-coordinating of functional signal, and the retransmitted own functional signal energy has enough redundancy to overcome the dead point and to regain balance.



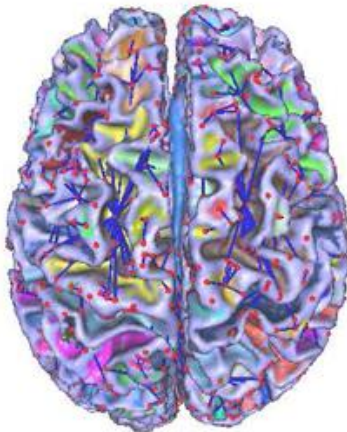




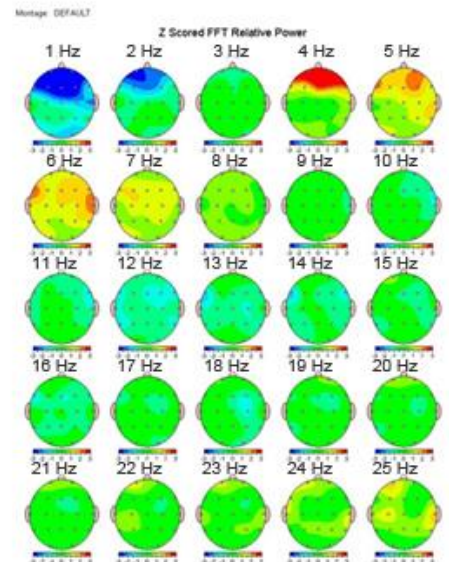
continuous  
interactivity



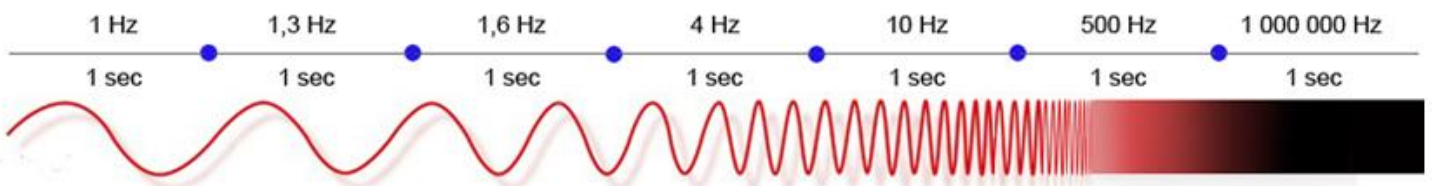
Uses logic  
Detail oriented  
facts rule  
Words and language  
Present and past  
Math and Science  
Can comprehend  
knowing  
Acknowledges  
Order/pattern perception  
Knows object's name  
Reality based  
forms strategies  
Practical  
Safe



Uses feeling  
„Big Picture“ oriented  
imagination rules  
Symbols and images  
Present and future  
Philosophy and religion  
Can 'get it' (i.e. meaning)  
Believes  
Appreciates  
Spatial perception  
Knows object's function  
Fantasy based  
present possibilities  
Impetuous  
risk taking



E MOST - ElectroMagnetic Own Signal Therapy  
[www.emost-med.com](http://www.emost-med.com)



BRAIN ACTIVITY



E MOST Redox 1.1 medical device's range: 1- 1 MHz ( $\mu$ V)  
E MOST - ElectroMagnetic Own Signal Therapy™

